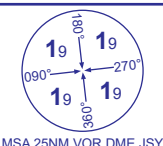


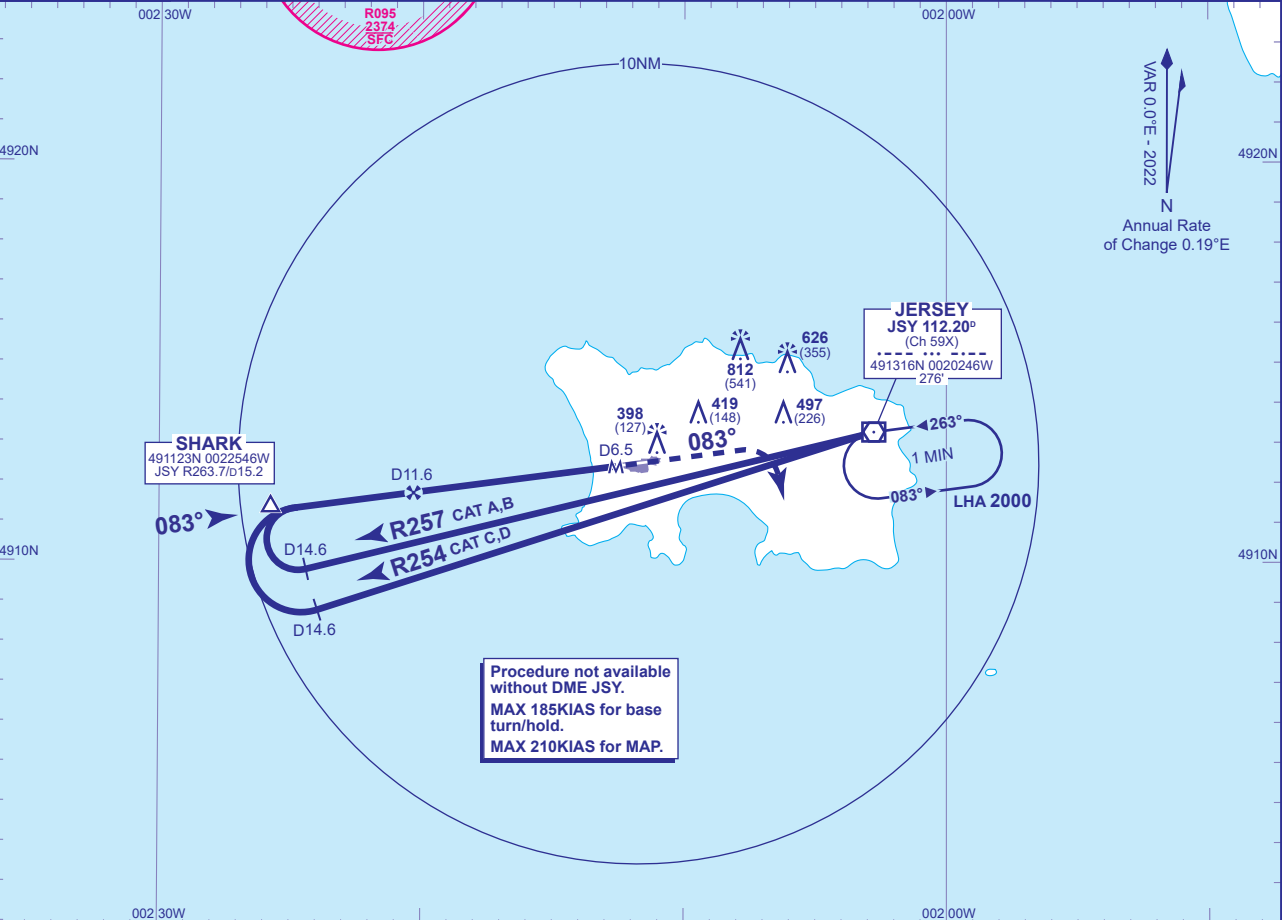
INSTRUMENT APPROACH - ICAO

JERSEY
VOR/DME
RWY 08
(ACFT CAT A,B,C,D)



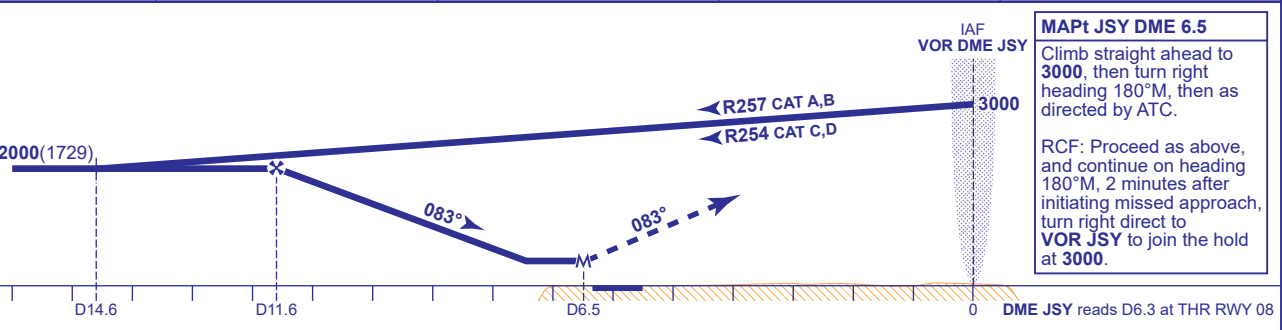
ATC	125.205, 120.450	JERSEY CONTROL	AD ELEVATION	277
APP	120.305, 118.555	JERSEY APPROACH	THR ELEVATION	271
TWR	119.455	JERSEY TOWER	OBSTACLE ELEVATION	812 AMSL (541) (ABOVE THR)
	121.905	JERSEY GROUND	BEARINGS ARE MAGNETIC	
ATIS	134.680	JERSEY INFORMATION		

TRANSITION ALTITUDE
5000



RECOMMENDED PROFILE Gradient 5.2%, 320FT/NM

THR (JSY DME)	5(11.3)	4(10.3)	3(9.3)	2(8.3)
ALT(HGT)	1920(1649)	1600(1329)	1280(1009)	960(689)



Aircraft Category	A	B	C	D	Rate of descent	G/S KT	160	140	120	100	80
OCA (OCH)	Procedure	660(389)	660(389)	660(389)	660(389)	FT/MIN	850	750	640	530	430
VM(C)OCA (OCH AAL)	Total Area	770(493)	770(493)	1210(933)	1210(933)						
	South of RWY 08/26	770(493)	770(493)	1030(753)	1030(753)						

DIRECT ARRIVALS
Subject to ATC approval, following standard arrival routes to SHARK, from SHARK establish on extended FAT JSY R263, then descend to **2000(1729)** then continue as for basic procedure.

CHANGE (1/22): JSY VOR RECALIBRATED.